

Heavy duty flatwork ironer

C-Flex 900, 1200



Features and benefits

- Chest type industrial ironer with mobile chest and fixed roll, offering a constant pressure and a maximum ironing surface for the utmost ironing quality
- Steam or thermal fluid heating
- The unique design of the chest and roll combined with an improved thermal insulation give a thermal output close to 97%
- Up to three chest can be mounted together for a 50m/min maximum ironing speed
- Simple and reliable drive, possible thanks to the fixed roll technology
- One adjustable suction fan per roll for an improved vapor suction
- Springpress® fitting for an optimum roll and chest contact and an optimized vapor extraction

Main options

- Stainless steel Springpress® fitting for an extended longevity
- Nomex padding withstand temperatures above 180°C
- Extra insulation of the casings for a lower energy consumption and an improved working environment
- Vacuum feeding table for an easier use
- Preset ironing speeds or special speed ranges to customize the ironing to the user specificities
- Connection with feeding and folding systems

| Main specifications | | | | C-Flex 900 | C-Flex 1200 |
|-------------------------|----------------------|-------|--|------------------------|------------------------|
| Max. water evaporation* | | l/h | | 205-795 | 210-1260 |
| Cylinder | number | | | 1-3 | 1-3 |
| | diameter | mm | | 900 | 1200 |
| | length | mm | | 2700, 3000, 3300, 3500 | 3000, 3300, 3500, 4200 |
| Ironing speed** | | m/min | | 4-51 | 6-51 |
| Heating | steam consumption*** | kg/h | | 240-960 | 295-1530 |

* 12 bars steam heating, smallest - biggest machine and 100% cylinder use, see detailed data

** See detailed data for available speed ranges per dimension

*** 12 bar steam heating, smallest - biggest machine, see detailed data



| Electrical connections | | 927 | 930 | 933 | 935 |
|--|-------------------|-------|------|----------|-------|
| Voltage | | | | | |
| 400-415V 3AC 50Hz - 1 roll | kW | | | 4.6 | |
| 400-415V 3AC 50Hz - 2 rolls | kW | | | 12 | |
| 400-415V 3AC 50Hz - 3 rolls | kW | | | 22 | |
| Steam and air connections | | | | | |
| Max. steam pressure | kPa | | | 1400 | |
| Compressed air | DN | | | 15 | |
| 1 roll | | | | | |
| Steam | DN | | | 32 | |
| Condensate | DN | | | 25 | |
| Exhaust dia. (K) | mm | | | 200 | |
| Evacuated air | m ³ /h | | | 2000 | |
| 2 rolls | | | | | |
| Steam | DN | | | 40 | |
| Condensate | DN | | | 32 | |
| Exhaust dia. (K) | mm | | | 2 x 200 | |
| Evacuated air | m ³ /h | | | 2 x 2000 | |
| 3 rolls | | | | | |
| Steam | DN | | | 50 | |
| Condensate | DN | | | 40 | |
| Exhaust dia. (K) | mm | | | 3 x 200 | |
| Evacuated air | m ³ /h | | | 3 x 2000 | |
| Sound level | | | | | |
| Airborne sound level | dB(A) | | | 66 | |
| Heat emission | | | | | |
| % of installed power, standard insulation | | | | 5 | |
| % of installed power, extra insulation | | | | 3 | |
| Performances and energy consumption | | | | | |
| 1 roll | | | | | |
| Max. water evaporation (14 bar) | l/h | 205 | 225 | 250 | 265 |
| Steam average consumption (12 bar) | kg/h | 240 | 270 | 300 | 320 |
| Average linen output (12 bar)* | kg/h | 330 | 370 | 410 | 435 |
| Ironing speed** | m/min | 5-15 | | | |
| 2 rolls | | | | | |
| Max. water evaporation (14 bar) | l/h | 410 | 450 | 500 | 530 |
| Steam average consumption (12 bar) | kg/h | 480 | 540 | 600 | 640 |
| Average linen output (12 bar)* | kg/h | 660 | 740 | 820 | 870 |
| Ironing speed** | m/min | 9-27 | | | |
| 3 rolls | | | | | |
| Max. water evaporation (14 bar) | l/h | 615 | 675 | 750 | 795 |
| Steam average consumption (12 bar) | kg/h | 720 | 810 | 900 | 960 |
| Average linen output (12 bar)* | kg/h | 940 | 1110 | 1230 | 1305 |
| Ironing speed** | m/min | 14-42 | | | |
| Dimensions | | | | | |
| A width | mm | 3900 | 4200 | 4500 | 4700 |
| B ironing width | mm | 2700 | 3000 | 3300 | 3500 |
| C length 1 roll | mm | 1685 | | | |
| C length 2 rolls | mm | 2955 | | | |
| C length 3 rolls | mm | 4225 | | | |
| D height | mm | 1560 | | | |
| Net weight | | | | | |
| 1 roll | kg | 3010 | 3200 | 3400 | 3530 |
| 2 rolls | kg | 5980 | 6360 | 6760 | 7030 |
| 3 rolls | kg | 8950 | 9550 | 10170 | 10600 |

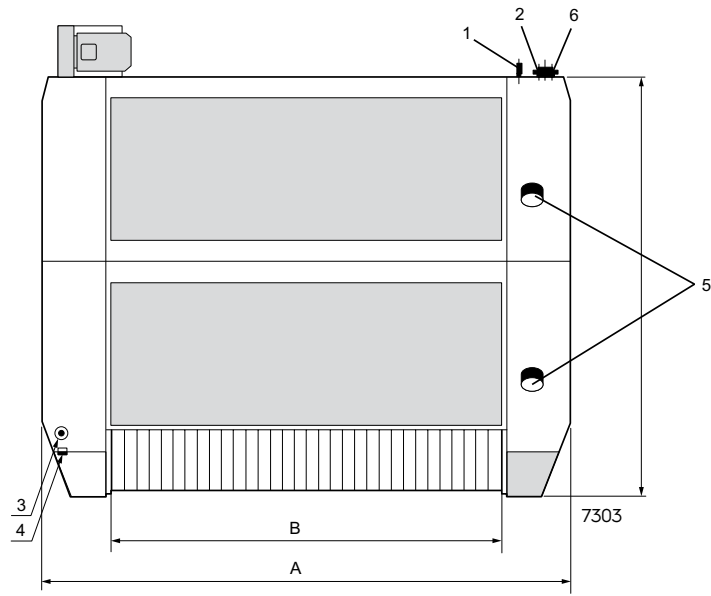
* 50% residual moisture, 140 gr/m² polyester-cotton linen, 100% cylinder use

** Other speed range available on request

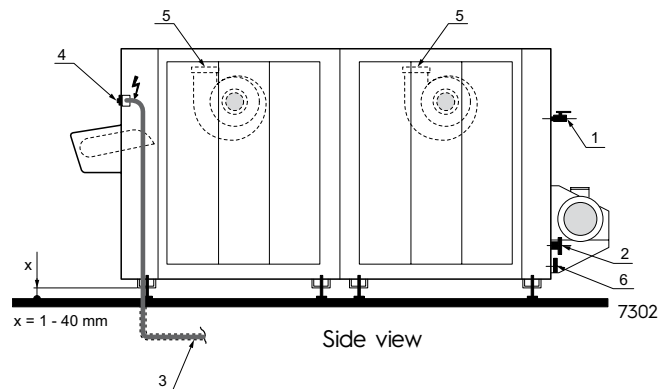
| Electrical connections | | 1230 | 1233 | 1235 | 1242 |
|---|-------------------|-------|-------|----------|-------|
| Voltage | | | | | |
| 400-415V 3AC 50Hz - 1 roll | kW | | | 7.9 | |
| 400-415V 3AC 50Hz - 2 rolls | kW | | | 19.6 | |
| 400-415V 3AC 50Hz - 3 rolls | kW | | | 30 | |
| Steam and air connections | | | | | |
| Max. steam pressure | kPa | | | 1400 | |
| Compressed air | DN | | | 15 | |
| 1 roll | | | | | |
| Steam | DN | | | 40 | |
| Condensate | DN | | | 32 | |
| Exhaust dia. (K) | mm | | | 200 | |
| Evacuated air | m ³ /h | | | 2000 | |
| 2 rolls | | | | | |
| Steam | DN | | | 50 | |
| Condensate | DN | | | 40 | |
| Exhaust dia. (K) | mm | | | 2 x 200 | |
| Evacuated air | m ³ /h | | | 2 x 2000 | |
| 3 rolls | | | | | |
| Steam | DN | | | 65 | |
| Condensate | DN | | | 50 | |
| Exhaust dia. (K) | mm | | | 3 x 200 | |
| Evacuated air | m ³ /h | | | 3 x 2000 | |
| Sound level | | | | | |
| Airborne sound level | dB(A) | | | 66 | |
| Heat emission | | | | | |
| % of installed power, standard insulation | | | | 5 | |
| % of installed power, extra insulation | | | | 3 | |
| Performances and energy consumption | | | | | |
| 1 roll | | | | | |
| Max. water evaporation (14 bar) | l/h | 300 | 330 | 350 | 420 |
| Steam average consumption (12 bar) | kg/h | 360 | 395 | 420 | 510 |
| Average linen output (12 bar)* | kg/h | 500 | 550 | 585 | 710 |
| Ironing speed** | m/min | | | 8-24 | |
| 2 rolls | | | | | |
| Max. water evaporation (14 bar) | l/h | 600 | 660 | 700 | 840 |
| Steam average consumption (12 bar) | kg/h | 720 | 790 | 840 | 1020 |
| Average linen output (12 bar)* | kg/h | 1000 | 1100 | 1170 | 1420 |
| Ironing speed** | m/min | | | 14-43 | |
| 3 rolls | | | | | |
| Max. water evaporation (14 bar) | l/h | 900 | 990 | 1050 | 1260 |
| Steam average consumption (12 bar) | kg/h | 1080 | 1185 | 1260 | 1530 |
| Average linen output (12 bar)* | kg/h | 1500 | 1650 | 1755 | 2130 |
| Ironing speed** | m/min | | | 14-43 | |
| Dimensions | | | | | |
| A width | mm | 4200 | 4500 | 4700 | 5400 |
| B ironing width | mm | 3000 | 3300 | 3500 | 4200 |
| C length 1 roll | mm | | | 1985 | |
| C length 2 rolls | mm | | | 3555 | |
| C length 3 rolls | mm | | | 5125 | |
| D height | mm | | | 1760 | |
| Net weight | | | | | |
| 1 roll | kg | 3860 | 4100 | 4360 | 4820 |
| 2 rolls | kg | 7700 | 8200 | 8530 | 9700 |
| 3 rolls | kg | 11630 | 12400 | 12900 | 14650 |

* 50% residual moisture, 140 gr/m² polyester-cotton linen, 100% cylinder use

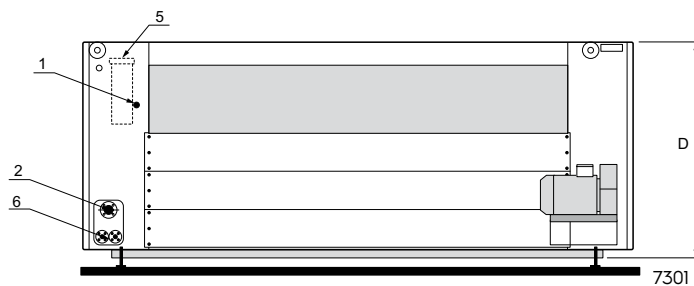
** Other speed range available on request



Top view



Side view



Rear view

- | | |
|-------------------------------|--------------------------------|
| 1 Compressed air inlet | 4 Main switch |
| 2 Steam inlet | 5 Vapor exhaust |
| 3 Electric connection | 6 Condensate connection |